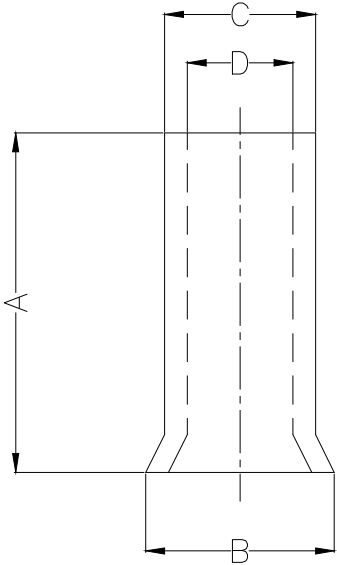


1 2 3 4 5 6 7 8

REV	LOCATIONS	DESCRIPTION	DATE	REVISER	APPD

Notes:

Material: Copper
 Plating: Bright tin plated
 Maximum temperature: 75°C
 Maximum electrical rating: 600V
 Wire range: 16mm² / (6AWG)



Dimensions			
A	B	C	D
±1	±0.5	±0.5	±0.5
12.0	7.2	6.2	5.8

A

B

C

D

E

F

A

B

C

D

E

F

<p>THIRD ANGLE PROJECTION</p>	GENERAL TOLERANCES (UNLESS SPECIFIED)		APPROVE BY LEO	DATE 17/JAN/21	PART NO. FET01-016001200B0N8	ITEM NO. FET01	<p>Building Technology Cornerstone</p>	
	DESIGN UNITS mm	X. ±0.30 X.X ±0.20 X.XX ±0.15 X.XXX ±0.10	X.* ±5' X.X' ±2' X.XX' ±1' X.XXX' ±0.5'	CHECKED BY GISELLE	DATE 17/JAN/21	TITLE Cord end terminal		REV 0
SCALE 5:1	SIZE A4	DRAWN BY PYD		DATE 17/JAN/21	THIS DRAWING CONTAINS INFORMATION THAT IS PROPRIETARY TO TXGA INDUSTRIAL ELECTRONICS(S.Z)CO.,LTD AND SHOULD NOT BE USED WITHOUT WRITTEN PERMISSION			

1 2 3 4 5 6 7 8